

LNG PRODUCER CONSUMER CONFERENCE 2017

**PRODUCER CONSUMER COOPERATION
TOWARDS DEVELOPING LNG MARKET IN ASIA
- GOVERNMENT PERSPECTIVES**

**LETÍCIA DEUSINA DA SILVA KLEMENS
MINISTER OF MINERAL RESOURCES AND ENERGY
THE REPUBLIC OF MOZAMBIQUE**

18 October 2017

Tokyo





A New Global Source of Energy Security



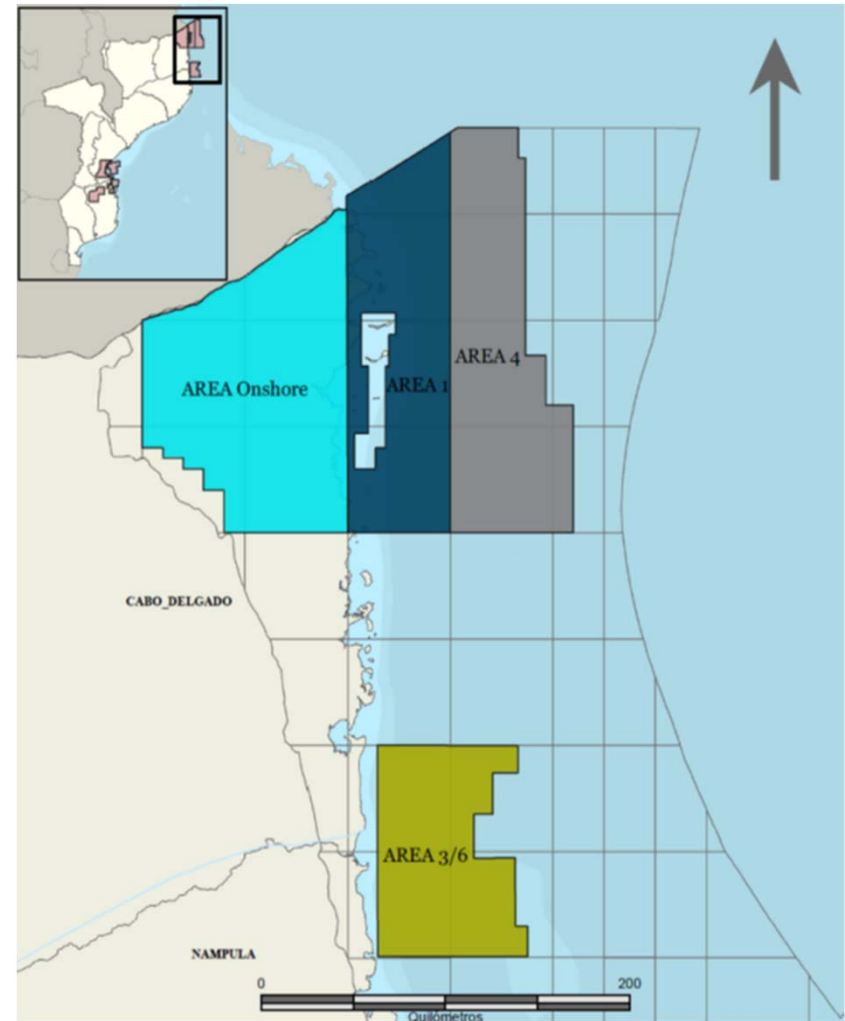
➤ Geographical

- East Africa – access to markets
- Close to shore – ~40 km
- Water depth – 300 m to 1900 m
- Afungi Peninsula – conducive location for LNG facilities

➤ Geological

- One of the largest gas discoveries globally in past 20 years
- Multiple reservoirs
- High-quality reservoir rock
- 100+Tcf recoverable gas resource

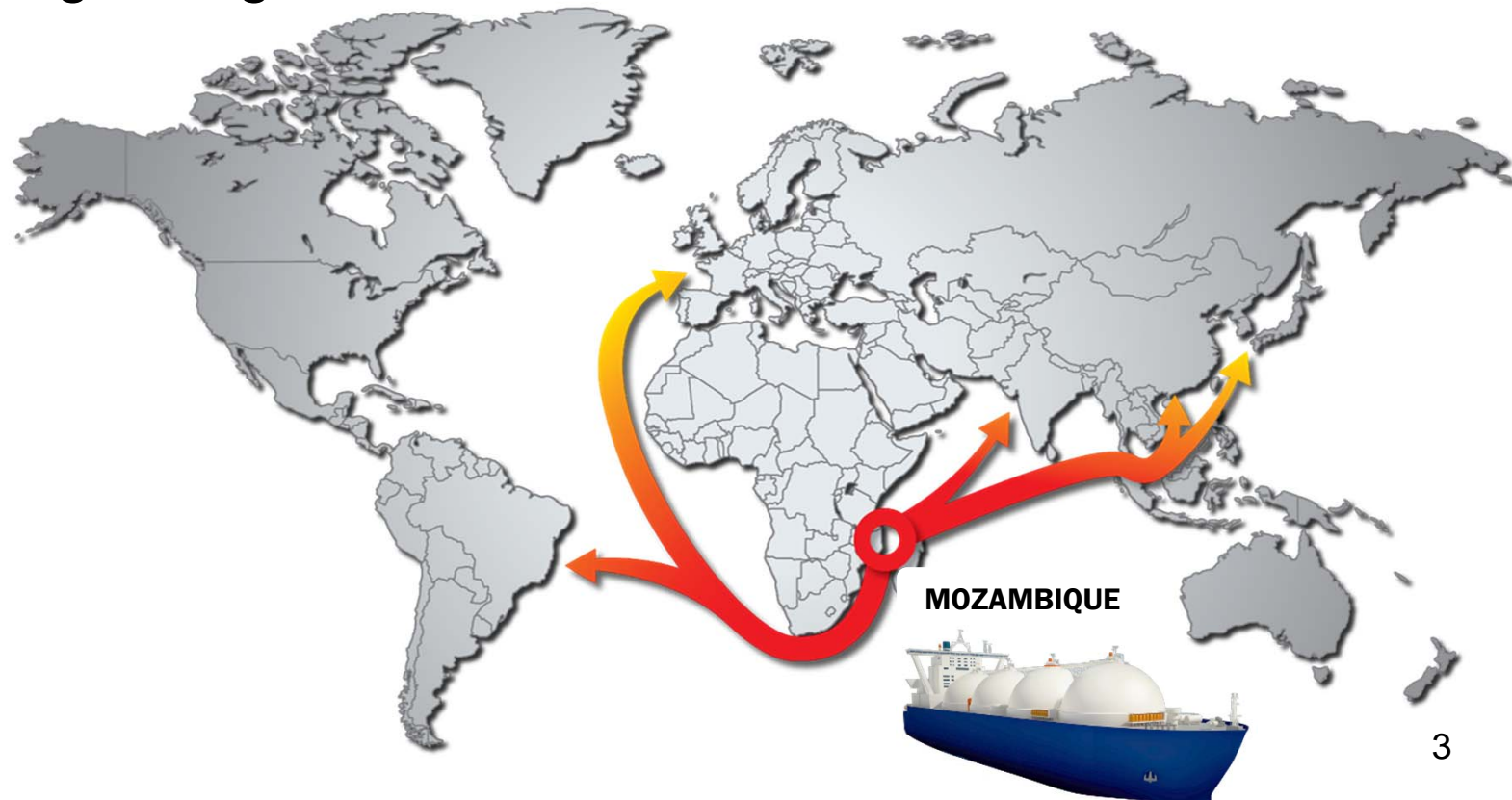
➤ Ability to Expand





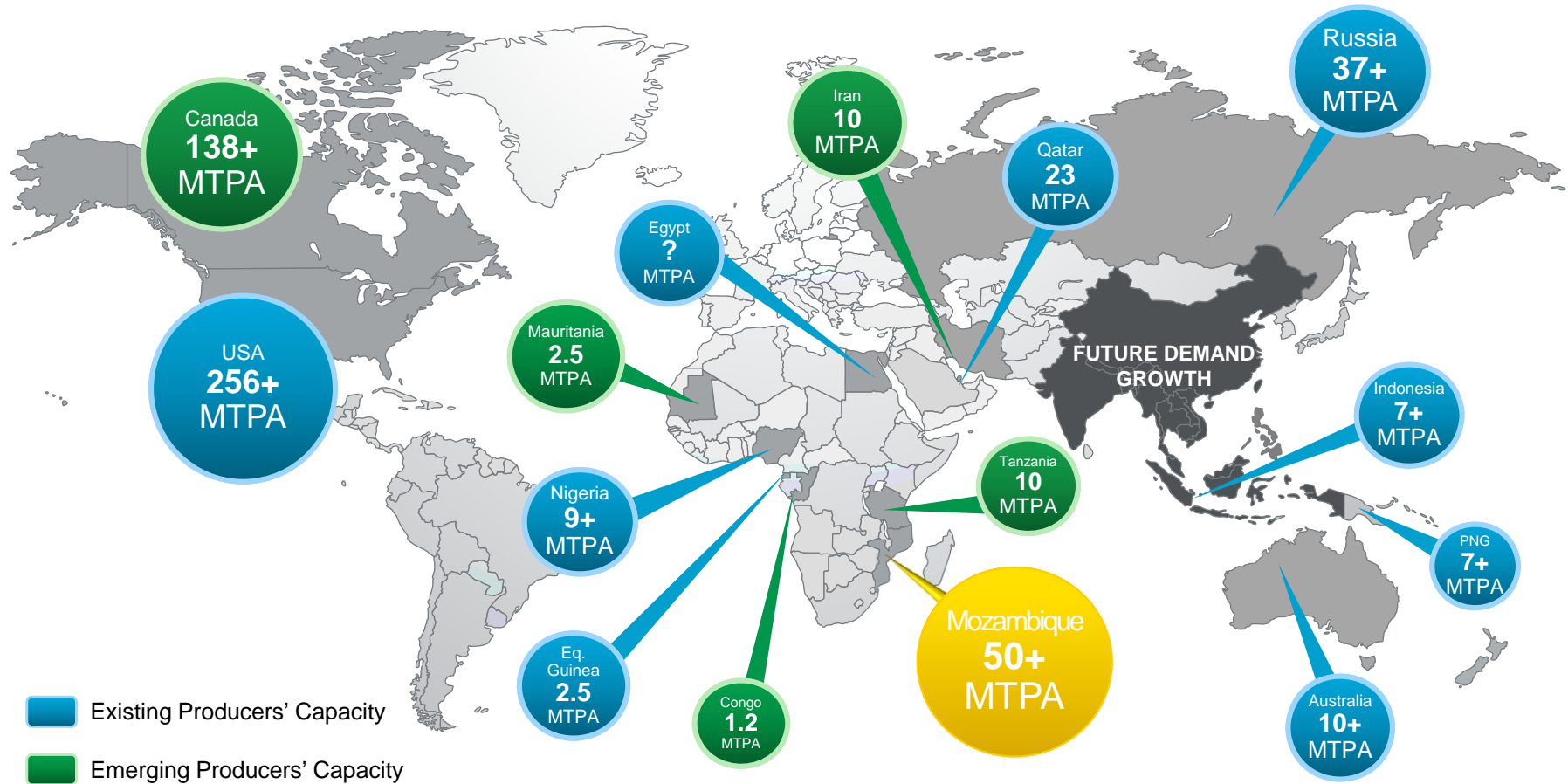
Strategic Rationale for Mozambique LNG

- The geographic location of the resources provides flexibility for Mozambique LNG to pursue customers in various markets around the globe, particularly in growing Asian markets.





Who Could Fill This Demand Gap?



Source: IHS, APC

Real opportunity exists to diversify supply sources



Why Mozambique LNG?

- Massive Resource Base – 100+ Tcf
- Expandable to minimum 8 – 10 Trains – 50+ MTPA
- Opening up of New LNG Supply Basin for 21st Century
- Enhancing Global Energy Security through Diversification
- Centrally located to support Atlantic Basin / Pacific Basin Trade
- Competitive and Flexible Terms
- Partner Commitment backed by Host Government Support

