

SUCCESS PROJECTS

-

ICLEI South America

Rodrigo Perpétuo
Executive Secretary - South America

ABOUT ICLEI

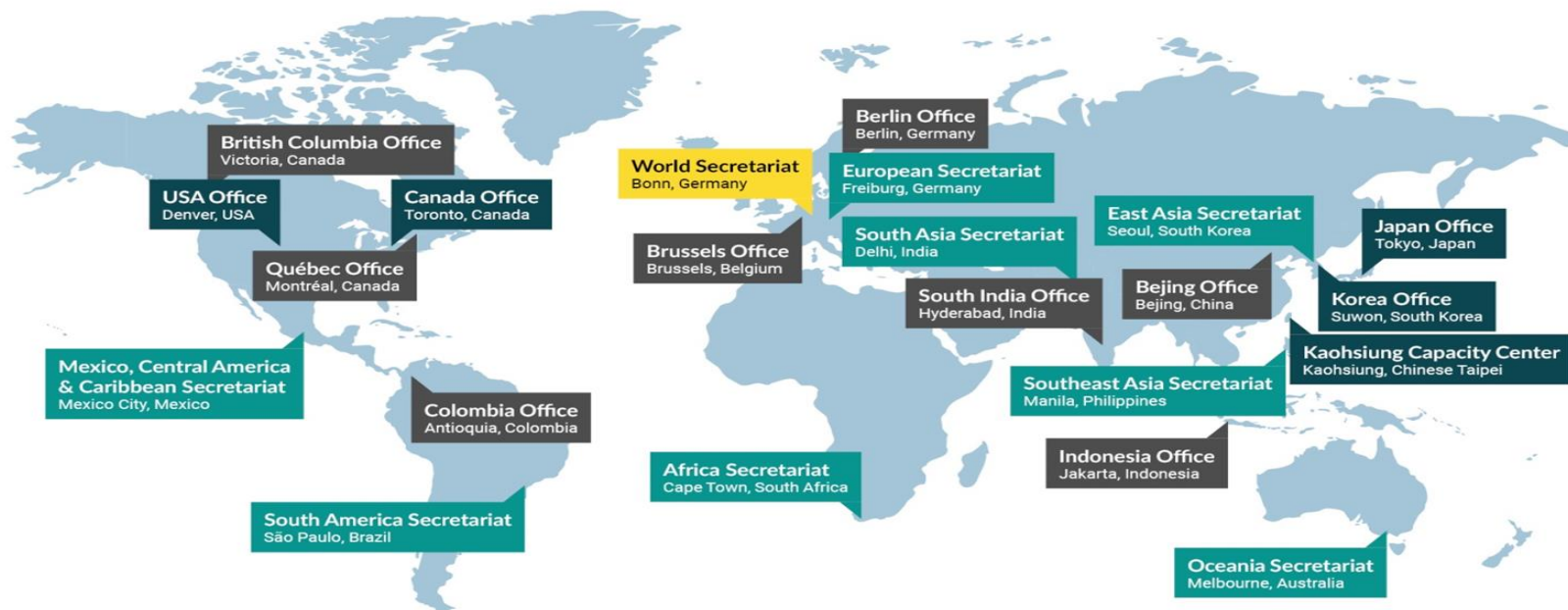


ICLEI – Local Governments for Sustainability is a global network of more than 1,750 local and regional governments committed to sustainable urban development.

Active in 100+ countries, we influence sustainability policy and drive local action for low emission, nature-based, equitable, resilient and circular development.

Our Members and team of experts work together through peer exchange, partnerships and capacity building to create systemic change for urban sustainability.

ICLEI AROUND THE WORLD



- Secretariat office
- Country office
- Project office

For decades, our efforts continue to place sustainability high on the agenda of local and regional governments around the world. ICLEI has developed and expanded, and now operates in over 100 countries, with global specialists in over 20 offices.

THE FIVE ICLEI PATHWAYS

DEVELOPMENT:



LOW EMISSION



NATURE-BASED



**EQUITABLE AND PEOPLE-
CENTERED**



RESILIENT



CIRCULAR

THE FIVE ICLEI PATHWAYS

The **FIVE ICLEI PATHWAYS** towards low emission, nature-based, equitable, resilient and circular development are designed to create **SYSTEMIC CHANGE**. The pathways are a framework for designing **INTEGRATED SOLUTIONS** that balance the patterns of human life and the built and natural environments.

They are a basis for sustainable urban development that considers the complexity of urban systems. The pathways encourage **HOLISTIC THINKING** to ensure that ICLEI optimizes our impact. For instance, we consider how nature-based development contributes to resilience, or how to bring equity into low emission development.

THE FIVE ICLEI PATHWAYS



We design our work to integrate as many pathways as possible into any given activity such as a **PROJECT**, **PARTNERSHIP** or **INITIATIVE**. When these pathways guide local and regional development, urban system becomes more sustainable.

Urban systems are part of a broader city-region territory. Local and regional governments and their urban systems are **INTERCONNECTED**. We address city-to-city and rural-urban linkages to create a multiplier effect.

GLOBAL GOALS THAT GUIDE OUR ACTION

The image shows a vertical timeline of global goals. It is divided into four horizontal sections with colored backgrounds: green (2010), blue (2015), yellow (2015), and red (2016).
- The 2010 section (green) features a grid of 20 Aichi Targets icons, each with a number from 1 to 20.
- The 2015 section (blue) features a large green leaf icon with the Eiffel Tower inside it, and the text 'PARIS2015 UH CLIMATE CHANGE CONFERENCE COP21·CMP11'.
- The 2015 section (yellow) features the United Nations logo and the text 'OBJETIVOS DE DESENVOLVIMENTO SUSTENTÁVEL'.
- The 2016 section (red) features a stylized 'N U A' logo and the text 'IMPLEMENTANDO LA NUEVA AGENDA URBANA'.

ICLEI ACTION FRONTS

- THEMATIC APPROACHES

LOCAL GOVERNMENTS

In our network, public managers are trained and access best practices for informed cities; exchange experiences and knowledge for connected cities; access solutions for smart territories; influence global negotiations for major cities; and carry out impact and visibility actions for sustainable territories.

Going further, finding the potential of the territory with opportunities that have a positive impact on people's quality of life, prosperity and the environment is what differentiates the governments associated with ICLEI in South America.

ICLEI ACTION FRONTS

- SUSTAINABLE CITIES SOLUTIONS

ICLEI OFFERS

ICLEI has offers linked to the sustainable agenda, such as the Solutions Package and projects with permanent action with associates that help municipalities improve their work in thematic approaches: Biodiversity, Sustainable Development, Climate Change.



Biodiversity



Sustainable Development



Climate Change

SOLUTIONS



ONLINE TRAINING
MUNICIPAL GHG EMISSION
INVENTORIES



WEB PLATFORM GHG
EMISSION INVENTORY



ONLINE TRAINING | CLIMATE
ACTION PLAN



WEBINARS ABOUT NATURE-
BASED SOLUTIONS



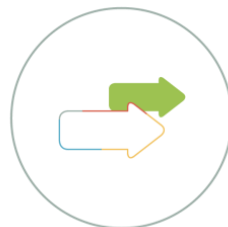
SUSTAINABLE DIALOGUES



NEW: TRAINING YOUNG
AMBASSADORS BY
CLANT-FOR-THE-PLANET CLIMATE



THEMATIC
NETWORKS



PARTICIPATION IN
PROJECTS



VOLUNTEER PROGRAM
FOR LOCAL SUSTAINABILITY



EVENTS

STRATEGIC ACTIVITIES

Global Covenant of Mayors for Climate and Energy

Local, regional and global city networks are core partners, serving as the primary support for participating cities and local governments. As a member of the Founders Council, ICLEI actively engages in GCoM strategic initiatives and provides technical support for around 400 committed cities and local governments worldwide.



Brazilian Secretaries of the Environment Forum (CB27)

ICLEI, had been following the development of the Forum since its inception, has officially partnered with KAS Brazil to contribute to the content curation and institutional strengthening of the group. Partnership with both organizations is fundamental for the strategic planning and holding of CB27 Forum meetings.



ICLEI ACTION FRONTS

- ICLEI'S PROJECTS

MAIN PROJECTS IN 2019



CITYFOOD



MAIN PROJECTS IN 2019



EcoLogistics
Low carbon freight for sustainable cities



LOCAL PROTECTED AREAS (APL)

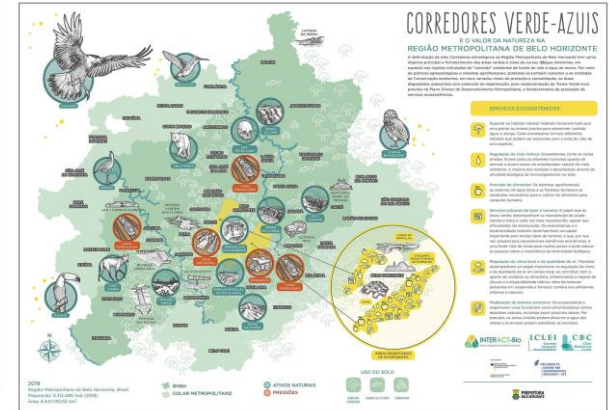
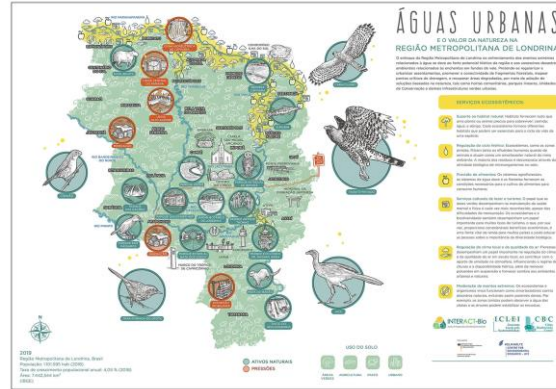
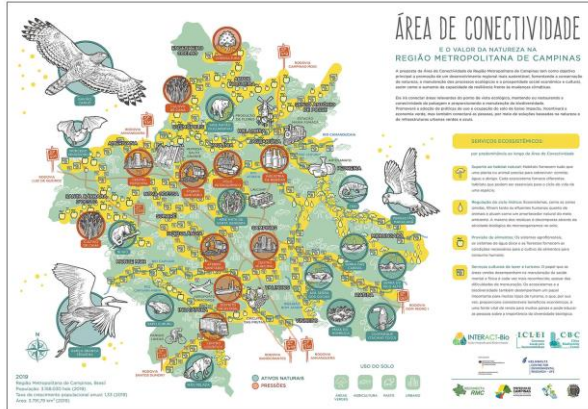
As an integral part of the landscape, protected areas and other conservation measures managed by local governments contribute to ecological connectivity and protect biodiversity. The project aims to contribute to improving the conditions of local governments to conserve biodiversity through effective and equitable management of protected areas and other conservation measures. The countries Brazil, Colombia, Ecuador and Peru are shelters of terrestrial biodiversity of global importance and this is where the APL project is implemented.



INTERACT-Bio

Implemented in Brazil (Campinas, Belo Horizonte and Londrina Metropolitan Regions), India and Tanzania, INTERACT-Bio is designed to improve the use and management of nature in fast-growing cities and their neighboring regions as a way to lessen the impact. generated by these large urban centers. The project supports metropolitan regions to understand the potential of the regional ecosystem while also generating better economic opportunities.

ILLUSTRATED MAPS OF INTERACT-Bio



Campinas, Londrina and Belo Horizonte are the Brazilian cities where the project is implemented. In October, the project's illustrated maps were launched, where areas called “ecosystem services” in the regions were all mapped.

Urban-LEDS II

Through the Urban-LEDS project, cities develop comprehensive Low Emissions Development Strategies (LEDS) and work together to implement their plans and develop pilot projects and financing models to implement these strategies.

There are 15 participating local governments in South America, 8 in Brazil - Belo Horizonte, Betim, Curitiba, Fortaleza, Porto Alegre, Recife, Rio de Janeiro and Sorocaba - and 7 in Colombia - Manizales, Topaga, Ibagué, Metropolitan Valley from Aburrá (Envigado), Carthage, Valledupar, Santiago de Cali.

URBAN - LEDS II: RECIFE

The second phase of the Urban LEDS project: Accelerating Climate Action through Low Carbon Development Strategies, has already had its first edition with the participation of the Pernambuco capital as a model city. Through the project, the city can foster sustainable initiatives with lenders to capture investments in global forums. Recife is one of the cities hardest hit by sea level rise in the world.



Mayor Geraldo Julio signed the adhesion to the new moment of the project at the 73rd General Meeting of the National Front of Mayors in Niterói (RJ). (Photo: Luciana Carneiro/Press Release)

EcoLogistics

Cargo vehicles produce more emissions than those that carry passengers alone. In addition, difficulties in loading and unloading and navigating traffic contribute to serious environmental challenges. Led by ICLEI, EcoLogistics is designed to promote effective regulatory, planning and logistics tools at all levels of government to support low carbon urban freight. It is present in India, Argentina and Colombia. A key target for the project is the development of national policy recommendations based on the results observed in the project cities.



Release on Argentina

Argentina: Rosario and Santa Fe
In Colombia: Bogota, AMVA and Manizales.

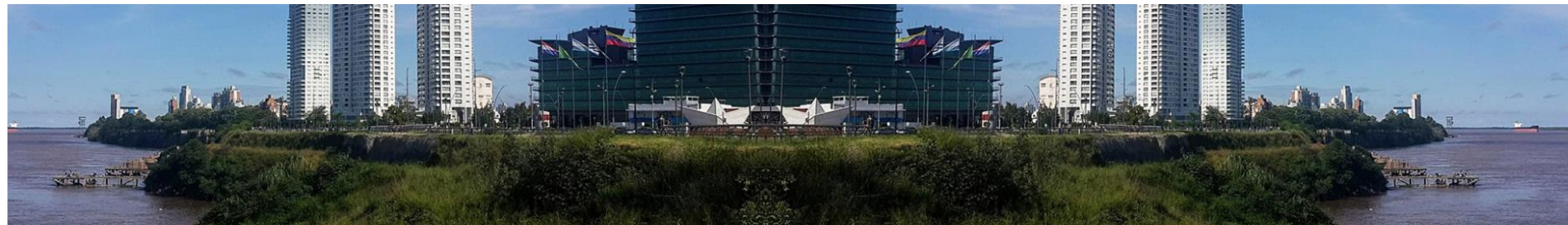
ICLEI ACTION FRONTS

- INTERNATIONAL RESOURCES AND FINANCING

INTERNATIONAL RESOURCES

ICLEI consolidates itself as a platform for meeting, exchanging, learning, visibility, knowledge production and reciprocal construction.

Members find openness to learn and inspire, with access to information, training, and connection with local initiatives, projects, funding sources, or policy support.



INTERNATIONAL RESOURCES (e.g)

ICLEI South America recognizes the challenges of cities in designing and securing project funding. **ICLEI LEADS Lab** was then developed by the Urban-LEDS II Project to assist cities in designing projects to clearly consider mitigation and climate adaptation aspects.



**BRAZILIAN LOCAL GOVERNMENTS
THAT ACCESSED
INTERNATIONAL FINANCING
WITH ICLEI SUPPORT**

FORTALEZA - CEARÁ

The city of Fortaleza will receive a loan of **\$300 million** from the World Bank for environmental actions. Contract was signed in June 2019 by Mayor Roberto Claudio. Negotiations with IBRD have been taking place since 2014 and represent the first international financing in the history of Fortaleza City Hall focused exclusively on the environmental area.



Foto: Prefeitura de Fortaleza

PORTO ALEGRE - RIO GRANDE DO SUL

Porto Alegre City Hall and the German Agency for International Cooperation, which works in conjunction with the European Investment Bank, have signed a Cooperation Agreement to enable the installation of solar energy systems in the municipal buildings of the city's public school system. The project is estimated at **\$50 million** and the term of cooperation is the first step to the search for resources.



Foto: Prefeitura de Fortaleza

TERESINA - PIAUÍ

Teresina City Hall and the French Development Agency (AFD) signed a long-term Cooperation Agreement in June 2019. It includes the Mobility Observatory, a technology project to improve the operation of public transport. Data open for public consultation will provide real-time information on schedules, routes, performance and transportation service. A contribution of **500,000 euros** is planned for the project.



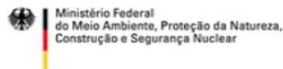
PARTNERS



PARTNERS



Por ordem do



da República Federal da Alemanha



CONTACT US

ICLEI SOUTH AMERICA

Rua Marquês de Itu, 70 - 14º andar
CEP 01223-000

São Paulo - SP, Brasil

Tel. +55 -11 50843079/+55 - 11
5084-3082

E-mail: iclei-sams@iclei.org



sams.iclei.org @ICLEIAmericadoSul @ICLEI_SAMS

